

Harbor Club Project Update

FRIDAY, OCTOBER 27TH, 2023

HARBOR CLUB – CONSTRUCTION AND SCHEDULE UPDATE

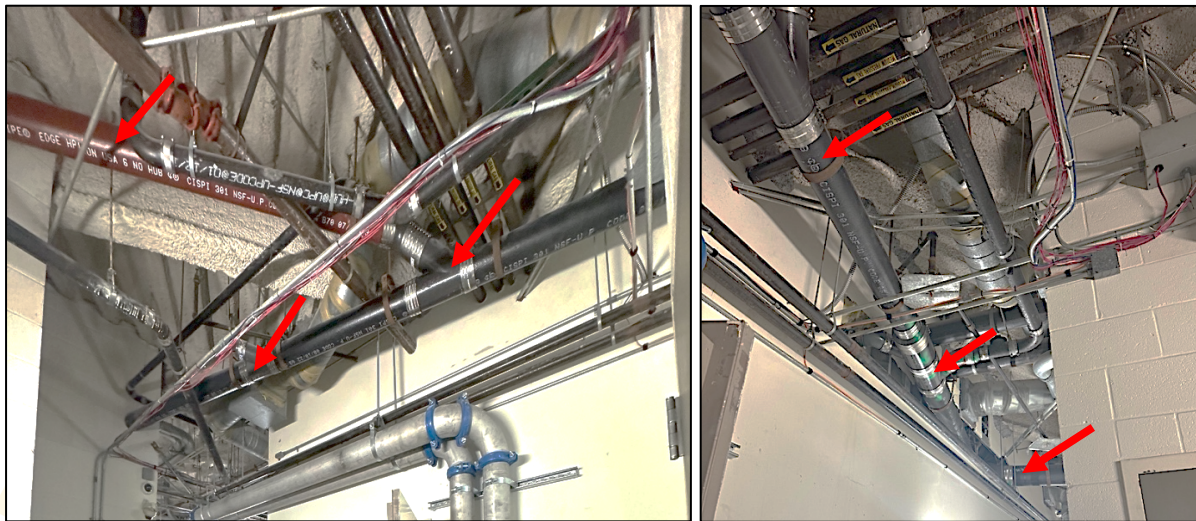
Dear Resident,

Please take a moment to review the Harbor Club project updates below.

West Tower Common Construction Update

Due to a delay in construction within the East tower, our construction crews have shifted their focus to the West tower to expedite the installation of the new hot and cold domestic main. Please take note that concrete coring will continue on floors 35 through 41, with the goal of establishing the connection to the boiler room on the roof. Coring work will commence on Monday, October 30th through Monday, November 6th from 8am to 5pm (excluding weekends). Subsequently, a water shut-down is planned for the West tower on Tuesday, October 31st, to connect the domestic mains from floors 41 to the roof. A separate notice, which includes a door hanger, has been provided to West tower residents and will be distributed on Friday, October 27th.

Additionally, we are pleased to announce that CMP has successfully completed the installation of the new 8" main drain line, which serves the entire West tower, on Wednesday, October 25th. The finalization of this 8" main drain marks the completion of the core scope of cast iron repairs for the West tower. Please refer to the attached photos below for further details.



East Tower Construction Update

As you are aware, the construction schedule for the East tower has experienced delays due to the ongoing repair work on the elevator. The presence of only one functioning elevator has hindered our ability to efficiently transport construction crews to their designated work areas and has limited our control over emergency response procedures within the facility.

We are pleased to report significant progress made last week, culminating in the comprehensive replacement of the 02' drain line, including the segment that traverses the Cromean's commercial unit. The following photos illustrate the condition of the previous 02' main drain line, which has now been successfully replaced and rectified:



**Exterior corrosion on the 4" main drain servicing all 02' units and the interior conditions which shows that the drain was heavily impacted.*

Please note that CMP will recommence construction as soon as the elevator has been repaired. Further updates will be provided.

We thank you for your patience and cooperation while we complete these important repairs.

Sincerely,

Greyson Connelly
Operations Manager
Cornerstone Managing Partners
(619) 507-8940
greyson@cmpcorp.net